

Automatic barrier

for beams up to 23 ft (7 m)



- The ideal solution for heavy traffic applications
- Hydraulic operator with opening and closing locks
- Electronic slow down and adjustable hydraulic pressure
- Programmable outputs to signal the status of the barrier
- Automatic, semi-automatic, parking logics
- External manual release with triangular key.
- Built-in detector, two independent channels.
- Continuous duty operation
- Automatic fan cooling
- Quiet operation
- UL325 listed

TECHNICAL SPECIFICATIONS 640

Input voltage	115 VAC (+10% -6%) - 230 Vac (+6% -10%)
Power	220W
Current	2A (115V) - 1 A (230V)
Motor rotation speed	1400 - 2800 r.p.m.
Pump flow rate	1 - 1.5 - 2 l/min
Opening time	4 s (with 16 ft beam)
Max Beam length	23 ft (7 m)
Thermal protection on motor winding	248 °F (120 °C)
Electronic deceleration	Adjustable with cams
Operating ambient temperature	-4°F ÷ 131°F (-20°C ÷ +55°C)
Use frequency	Continuous
Weight	185 lb (84 kg)
Barrier body treatment	100 micron epoxy zinc-plating anti-corrosion treatment
Paint	Polyester RAL 2004 (orange vers.)
Protection class	IP 44
Cooling	Forced air
Dimensions (L x D x H)	15 x 7.9 x 42.5 in (380x200x1080mm)
Thrust capacitor	8 µF 400 V

624BLD CONTROL BOARD TECHNICAL SPECIFICATIONS

Motor max. load	300 W
Accessories power supply	24 Vdc
Accessories max. current	500 mA
Operating ambient temperature	-4°F ÷ 131°F (-20°C ÷ +55°C)
Protection fuses	F1=F 5A-250 V F2=T 0,8A-250V
Function logics	11
Work time	Programmable (0 to 4 min)
Pause time	Programmable (0 to 4 min)
Motor thrust	Programmable on 50 levels
Terminal board inputs	Loop 1, Loop 2, Open, Close, Closing safety devices, Stop, Emergency, 230 Vac power supply+Earth
Connector inputs	Opening and closing limit switches, motor capacitor, beam release sensor
Terminal board outputs	Flashing lamp, fan, motor, 24 Vdc power supply, fail-safe, status output, 24 Vdc indicator light

640

Model	Shipping Wt (approx)	Part No.	Price
640 115V	190 lb (86 Kg)	See following table	\$4,444
640 230V	190 lb (86 Kg)	See following table	\$4,444

The packages 640 include: barrier body, hydraulic drive transmission system complete with balancing spring, installation accessories, a triangular release key.
NOTE: Make sure to order the beamkit when ordering the operator.

PART NUMBERS TABLE FOR BARRIER 640

Voltage	Pump Size	Beam	Spring No.	Orientation	Orange Cabinet Part No.	White Cabinet Part No.
230V	2 LT/min	13 feet	7210735	Left	10468282	10468283
				Right	10466082	10466083
	1.5 LT/min	16 feet	7210745	Left	10468382	10468383
				Right	10466182	10466183
	1 LT/min	20 feet	7210755	Left	10468482	10468483
				Right	10466282	10466283
23 feet		7210805	Left	10468582	10468583	
			Right	10466382	10466383	
115V	1.5 LT/min	13 feet	7210735	Left	104682821	104682831
				Right	104660821	104660831
		16 feet	7210745	Left	104683821	104683831
				Right	104661821	104661831
	1 LT/min	20 feet	7210755	Left	104684821	104684831
				Right	104662821	104662831
		23 feet	7210805	Left	104685821	104685831
				Right	104663821	104663831

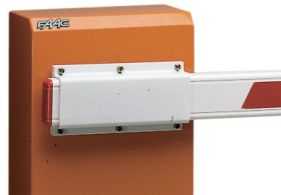
Rectangular Beam Kits

	Actual Length	Shipping Wt (approx)	Part No.	Price
13 feet	157.5 in (4000mm)	22 lb (10 Kg)	428061+	23.20
16 feet	196.8 in (5000mm)	28 lb (13 Kg)	428062+	23.70
20 feet	236.2 in (6000mm)	34 lb (15 Kg)	428063+	32.50
23 feet	275.6 in (7000mm)	40 lb (18 Kg)	428064+	38.20

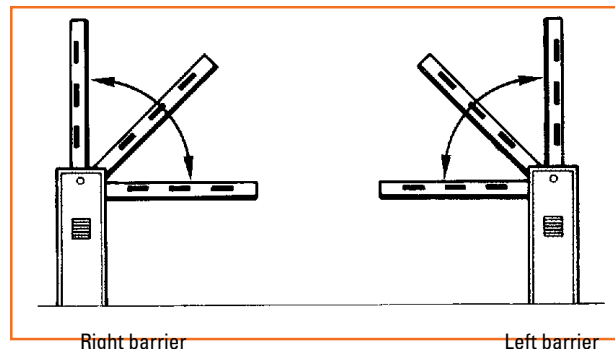
Note:
 The Beam Kits include:
 • Rectangular Alluminium Beam
 • Beam Bracket


Foundation plate

Part No. 490059
 Price \$294


Fastening pocket for rectangular beam

Part No. 428154
 Price \$246



You can determine right or left barrier version by looking at the barrier from the door side (see drawing above). The door usually faces the inside of the property.