

### Automatic barrier for beams up to 13 ft (4 m)

- The ideal solution for heavy traffic applications
- Hydraulic operator with opening and closing locks
- Electronic slow down and adjustable hydraulic pressure
- Programmable outputs to signal the status of the barrier
- Automatic, semi-automatic, parking logics
- External manual release with triangular key.
- Built-in detector, two independent channels.
- Continuous duty operation
- Automatic fan cooling
- Quiet operation
- UL325 listed



#### TECHNICAL SPECIFICATIONS 620 RAPID

Input voltage	115 VAC (+10% -6%) - 230 Vac (+6% -10%)
Power	220W
Current	2A (115V) - 1 A (230V)
Motor rotation speed	1400 - 2800 r.p.m.
Pump flow rate	1.5 - 2 l/min
Opening time	From 2 s to 3 s depending on beam length
Max Beam length	13.1 ft (4 m)
Thermal protection on motor winding	248 °F (120 °C)
Electronic deceleration	Adjustable with cams
Operating ambient temperature	-4°F ÷ 131°F (-20°C ÷ +55°C)
Use frequency	Continuous
Weight	161 lb (73 kg)
Barrier body treatment	100 micron epoxy zinc-plating anti-corrosion treatment
Paint	Polyester RAL 2004 (orange vers.)
Protection class	IP 44
Cooling	Forced air
Dimensions (L x D x H)	13.8 x 6.7 x 42.5 in (350x170x1080mm)
Thrust capacitor	8 µF 400 V

#### 624BLD CONTROL BOARD TECHNICAL SPECIFICATIONS

Motor max. load	300 W
Accessories power supply	24 Vdc
Accessories max. current	500 mA
Operating ambient temperature	-4°F ÷ 131°F (-20°C ÷ +55°C)
Protection fuses	F1=F 5A-250 V F2=T 0,8A-250V
Function logics	11
Work time	Programmable (0 to 4 min)
Pause time	Programmable (0 to 4 min)
Motor thrust	Programmable on 50 levels
Terminal board inputs	Loop 1, Loop 2, Open, Close, Closing safety devices, Stop, Emergency, 230 Vac power supply+Earth
Connector inputs	Opening and closing limit switches, motor capacitor, beam release sensor
Terminal board outputs	Flashing lamp, fan, motor, 24 Vdc power supply, fail-safe, status output, 24 Vdc indicator light

**620 RAPID**

Model	Shipping Wt (approx)	Part No.	Price
620 rapid 115V	165 lb (75 kg)	See following table	\$4,040
620 rapid 230V	165 lb (75 kg)	See following table	\$4,040

The packages 620 rapid include: Barrier body, hydraulic drive transmission system, balancing spring, control unit, installation accessories, a triangular release key. **NOTE:** Make sure to order the beamkit when ordering the operator

**PART NUMBERS TABLE FOR 620 RAPID BARRIER**

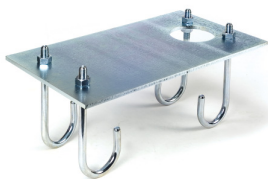
Voltage	Pump Size	Beam	Spring No.	Orientation	Orange Cabinet Part No.	White Cabinet Part No.
230V	2 LT/min	6 feet	7210855	Left	10463282	10463283
				Right	10465282	10465283
		8 feet	7210695	Left	10463382	10463383
				Right	10465382	10465383
	1.5 LT/min	10 feet	7210705	Left	10463482	10463483
				Right	10465482	10465483
115V	1.5 LT/min	10 feet	7210705	Left	104634821	104634831
				Right	104654821	104654831
		13 feet	7210885	Left	104635821	104635831
				Right	104655821	104655831

**Rectangular Beam Kits**

	Actual Length	Shipping Wt (approx)	Part No.	Price
6 feet	71.5 in (1815 mm)	10 lb (4.5 Kg)	428087/620+	\$309
8 feet	91.1 in (2315mm)	12 lb (5.4 Kg)	428088/620+	\$394
10 feet	110.8 in (2815mm)	15 lb (6.8 Kg)	428089/620+	\$440
13 feet	150.2 in (3815mm)	19.5 lb (8.8 Kg)	428090/620+	\$505

**Note:**

- The Beam Kits include:
- Rectangular Alluminium Beam
  - Beam Bracket


**Foundation plate**

Part No.	490058
Price	\$247

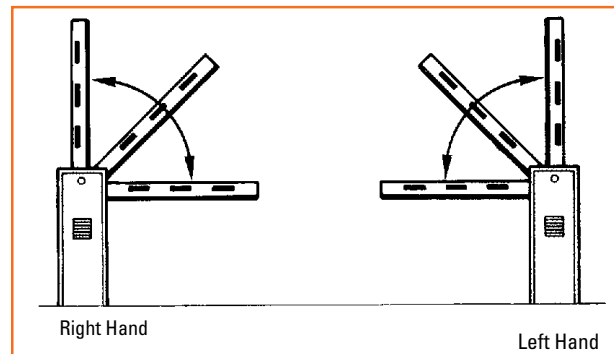

**Beam Brackets**

Rectangular beams	
Part No.	428342
Price	\$117
Round beams	
Part No.	428152
Price	\$311

**Note:**

When replacing beams on 620 barriers older than 2005 (serial no. 1005xxxx and below) the beam bracket will also need to be replaced and the adapter p/n **390265** will be needed.

Part No.	390265
Price	\$30



You can determine right or left barrier version by looking at the barrier from the door side (see drawing above). The door usually faces the inside of the property.